

# 2020 BACKCOUNTRY

## PACKAGE HIGHLIGHTS

- REV® Gen4 platform with narrow-design bodywork
- Rotax® 850 E-TEC® and 600R E-TEC® engines
- pDrive™ clutch with clickers
- cMotion™ rear suspension
- RAS™ 3 front suspension
- 15 x 146 x 1.6 in. Cobra track
- Brembo brake with braided stainless-steel brake line
- RER™ electronic reverse
- Adjustable ski stance
- RF D.E.S.S.™ key
- Standard electric start
- Performance trail seat
- Warm glove box with 4 L / 1 US gal of storage
- Open toe-hold
- Handlebar controls
- Improved running boards with large openings
- 4.5-in. digital display
- Handguards



BACKCOUNTRY™ 850 E-TEC® shown

ROTAX® ENGINE	850 E-TEC®	600R E-TEC®
Engine details	Liquid-cooled, two-stroke, eRAVE™	Liquid-cooled, two-stroke, eRAVE™
Cylinders	2	2
Displacement	849 cc / 51.9 in. <sup>3</sup>	599.4 cc / 36.6 in. <sup>3</sup>
Bore	82 mm / 3.2 in.	72.3 mm / 2.85 in.
Stroke	80.4 mm / 3.2 in.	73 mm / 2.87 in.
Maximum engine speed	7,900 RPM	8,100 RPM
Carburation	E-TEC® direct injection with additional booster injectors	E-TEC direct injection
Recommended fuel type	Premium unleaded	Premium unleaded
Minimum octane	91	91
Fuel tank	36 L / 9.5 US gal	36 L / 9.5 US gal
Oil tank capacity	3.4 L / 3.6 qt	3.4 L / 3.6 qt

## POWERTRAIN

Drive clutch type	pDrive™ with clickers	pDrive™ with clickers
Driven clutch type	QRS	QRS
Engagement	3,300 RPM	3,400 RPM
Small sprocket number of teeth	21	23
Large sprocket number of teeth	45	51
Drive sprocket number of teeth	8	8
Drive sprocket diameter	183 mm / 7.2 in.	183 mm / 7.2 in.
Brake system	Brembo brake with stainless-steel braided brake line	Brembo brake with stainless-steel braided brake line

## DRY WEIGHT

217 kg / 478 lb      214 kg / 471 lb

## FEATURES

Frame	REV® Gen4	Riser block height	120 mm / 4.7 in.	Mirrors	Optional
Bodywork	Narrow design	Starter	Electric	Windshield	360 mm / 14 in.
Skis	Pilot™ DS 2	Reverse	RER™	Runner	Square 3/8
Seating	Trail performance	Heated throttle lever/ grips	Standard	Carbide configuration	102 mm / 4 in. at 90°
Handlebar	U-shaped aluminum with J-hooks / Transparent handguards	Gauge	<b>4.5-in. digital display</b>	Hitch	Optional

## COLOR

Octane Blue / Black   
Black 

## DIMENSIONS

Vehicle overall length	3,110 mm / 122.4 in.
Vehicle overall width	1,140 to 1,180 mm / 44.9 to 46.5 in.
Vehicle overall height	1,274 mm / 50.2 in.
Ski stance	975 or 1,020 mm / 38.4 or 40.2 in.
Ski overall length	1,049 mm / 41.3 in.
Track nominal width	381 mm / 15 in.
Track nominal length	3,705 mm / 146 in.
Track profile height	40.6 mm / 1.6 in. Cobra

## SUSPENSION

Front suspension	RAS™ 3
Front shock	HPG™ Plus
Front suspension max. travel	220 mm / 8.7 in.
Rear suspension	cMotion™
Center shock	HPG™
Rear shock	HPG™
Rear suspension max. travel	239 mm / 9.4 in.



BACKCOUNTRY™ 600R E-TEC® shown



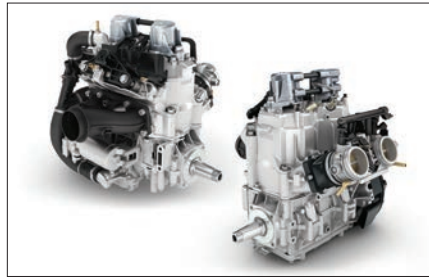
BACKCOUNTRY™ 850 E-TEC® shown

## FEATURE HIGHLIGHTS



### cMotion™ rear suspension

Crossover-specific suspension uses best principles of the rMotion™ trail and tMotion™ mountain skids for confident cornering and agile boondocking.



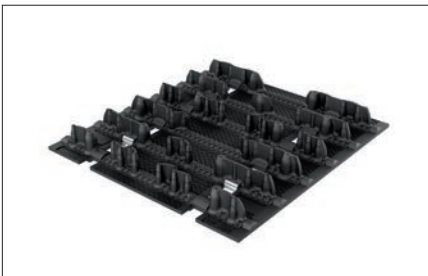
### Rotax® 850 E-TEC® and 600R E-TEC® engines

Incredible power and unmatched dynamic response with exclusive E-TEC® direct-injection technology. Plasma-coated, mono-block cylinders are used for exceptional durability, while the precision of E-TEC® injection means you get excellent fuel and oil economy.



### pDrive™ clutch

Fast and friction-free dual rollers transfer torque in place of traditional sliding buttons. Ultra-responsive shifting, impressive RPM consistency and lightweight.



### Cobra 15 x 146 x 1.6 in. track

This track features combination of flexible cupped lugs for superior off-trail performance and more rigid lugs for added traction on hard-packed snow.



### 4.5-in. digital display

All-digital LCD gauge cluster with flatter viewing angle for an easy-to-read info center whether standing or sitting.

## GAUGE FEATURES

Speedometer	Standard
Tachometer	Standard
Fuel	Standard
Engine temperature	Standard