

# 2022 EXPEDITION® SWT

A supreme deep-snow sport-utility vehicle with unrivaled flotation and an exemplary list of utility features.



EXPEDITION® SWT  
900 ACE™ TURBO SHOWN

## // WHAT'S NEW

- High-quality HPG shock package
- Two color options

## // PACKAGE HIGHLIGHTS

- Rotax® 600R E-TEC®, 900 ACE™ Turbo - 150 and 900 ACE™ engines
- 24 in. wide Multi-LinQ plate with 125 lb/56.7 kg cargo capacity
- 4.5-in. digital display
- RAS™ 3 front suspension
- SC™-5U articulating rear suspension with locking mechanism (no tool required)
- Air radiator with fan
- Deep-snow running boards with large openings
- Removable passenger seat with heated grips
- High passenger backrest
- Hitch receiver with 1,500 lb/680 kg towing capacity when equipped with an HD rear bumper. (1,200 lb / 544 kg std.)
- High-capacity battery
- Easy-shift transmission (H-L-N) with RER™ electronic reverse (2-stroke) / electro-mechanic reverse (4-stroke)
- 23 in. Ultra-high windshield with side deflectors
- Pivoting mirrors
- Pilot 7.4 skis
- Heated driver's visor power outlet
- Low handlebar strap
- pDrive™ clutch
- RF D.E.S.S.™ key

| ROTAX®<br>ENGINE         | 600R E-TEC®                       | 900 ACE™<br>TURBO - 150                                     | 900 ACE™                                      |
|--------------------------|-----------------------------------|---|---|
| Engine details           | Liquid-cooled, two-stroke, eRAVE™ | Liquid-cooled, four-stroke D.O.H.C., dry sump, turbocharged | Liquid-cooled, four-stroke D.O.H.C., dry sump |
| Horsepower               | 125                               | 150   | 95  |
| Cylinders - Displacement | 2 - 599.4 cc                      | 3 - 899 cc  | 3 - 899 cc                                    |
| Bore - Stroke            | 72.3 mm - 73 mm                   | 73 mm - 69.7 mm   | 73 mm - 69.7 mm                               |
| Carburation              | E-TEC® direct injection           | EFI   | EFI   |
| Fuel type - Octane       | Premium unleaded - 91             | Premium unleaded - 91                                       | Regular unleaded - 87                         |
| Fuel tank                | 42 L/11.1 US gal                  | 42 L/11.1 US gal  | 42 L/11.1 US gal                              |
| Oil tank capacity        | 3.3 L/3.5 qt                      | 3.3 L/3.5 qt  | 3.3 L/3.5 qt                                  |

| POWERTRAIN           | 600R E-TEC®           | 900 ACE™<br>TURBO - 150 | 900 ACE™                  |
|----------------------|-----------------------|-------------------------|---------------------------|
| Drive clutch         | pDrive™ with clickers | pDrive™                 | pDrive™ with slider shoes |
| Driven clutch        | QRS                   | QRS Vent                | QRS                       |
| Drive sprocket pitch | 73 mm/2.86 in.        | 73 mm/2.86 in.          | 73 mm/2.86 in.            |

| DRY WEIGHT | 600R E-TEC®   | 900 ACE™<br>TURBO - 150 | 900 ACE™      |
|------------|---------------|-------------------------|---------------|
| Dry weight | 285 kg/626 lb | 309 kg/681 lb           | 296 kg/650 lb |

| DIMENSIONS                 | 600R E-TEC® | 900 ACE™<br>TURBO - 150            | 900 ACE™ |
|----------------------------|-------------|------------------------------------|----------|
| Overall vehicle length     |             | 3,256 mm/128.2 in.                 |          |
| Overall vehicle width      |             | 1,200 to 1,240 mm/47.7 to 48.8 in. |          |
| Overall vehicle height     |             | 1,513 mm/59.6 in.                  |          |
| Ski stance                 |             | 975 or 1,020 mm/38.4 or 40.2 in.   |          |
| Track                      |             | Silent Cobra WT:                   |          |
| (Length x Width x Profile) |             | 154 x 24 x 1.5 in.                 |          |

| COLOR            |
|------------------|
| Lava Red / Black |
| Black            |

| SUSPENSION              |                |
|-------------------------|----------------|
| Front suspension        | RAS™ 3         |
| Front shock             | HPG™           |
| Front suspension travel | 220 mm/8.7 in. |
| Rear suspension         | SC™-5U         |
| Center shock            | HPG™           |
| Rear shock              | HPG™           |
| Rear suspension travel  | 239 mm/9.4 in. |

| FEATURES                    |   |
|-----------------------------|---|
| Frame                       | REV® Gen4   |
| Bodywork                    | Wide design   |
| Skis                        | Pilot™ 7.4  |
| Seating                     | 2-up modular with underseat storage                     |
| Handlebar                   | U-shaped aluminum with J-hooks/<br>Low grab handle      |
| Riser block height          | 145 mm/5.7 in.  |
| Starter                     | Electric  |
| Reverse                     | RER™ (2-stroke)<br>Electro-mechanic (4-stroke)          |
| Air radiator                | High-efficiency w/ fan (4-stroke)<br>Fan (2-stroke)     |
| Brake system                | Brembo brake with stainless-steel<br>braided brake line |
| Heated throttle lever/grips | Standard (driver and passenger)                         |
| Gauge type                  | 4.5 in. digital display                                 |
| Windshield                  | 585 mm/23 in.   |
| Runner - Carbide            | Square 3/8 in. - 4 in.                                  |
| Bumpers (front/rear)        | Heavy Duty/Hitch receiver                               |

## // FEATURE HIGHLIGHTS



### 1 Rotax® 900 ACE™ Turbo – 150 engine

With a Rotax-built turbocharger specifically designed for the 900 ACE engine, riders get the technology they love with the reliable, powerful performance they demand in one advanced engine package.



### 2 Utility 2-up utility seat

The ideal combination of comfort and convenience. Driver and passenger seat offering comfort and maneuverability for the driver, and convenience and protection for the passenger. Shielded and heated passenger hand grips.



### 3 SC™-5U articulating rear suspension

The articulated rail maximizes deep-snow traction in reverse, and its toolless locking mechanism is ideal for towing.

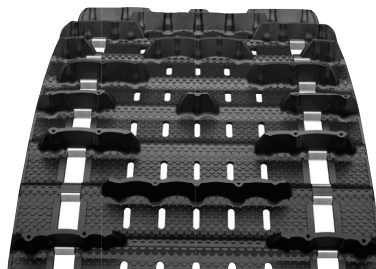


EXPEDITION® SWT  
900 ACE™ TURBO SHOWN



### 4 RAS™ 3 front suspension

Similar geometry and steering to the RAS 3 mountain front end for capability and light steering feel on- and off-trail. Optimized for crossover usage, two ski stance positions dial in handling: 40.2 in. [102 cm] or 38.4 in. [97.5 cm].



### 5 24 in. Super Wide Track (SWT)

The industry's largest footprint provides unmatched traction and helps achieve the lowest ground pressure in snowmobiling.



### 6 Multi-LinQ plate

Standard LinQ adaptable storage. Fits 16- and 20-inch-wide LinQ accessories to maximize accessory options. Up to 125 lb (56.7 kg) of cargo capacity.

**ski-doo**

